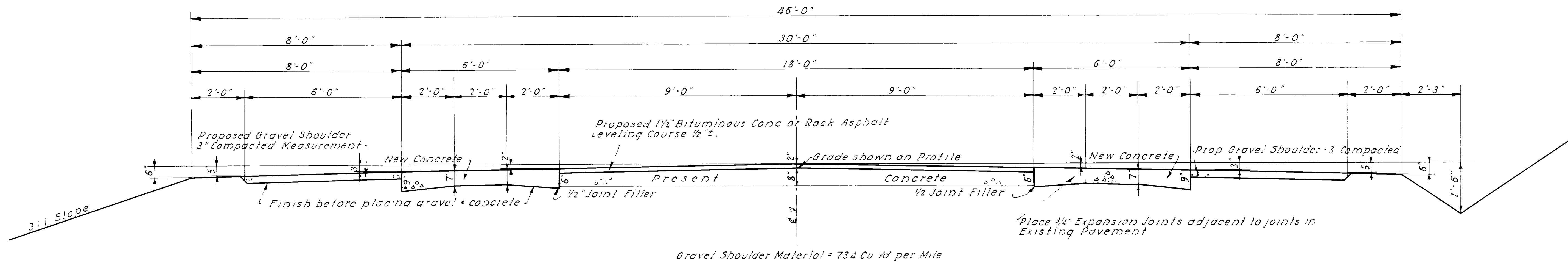
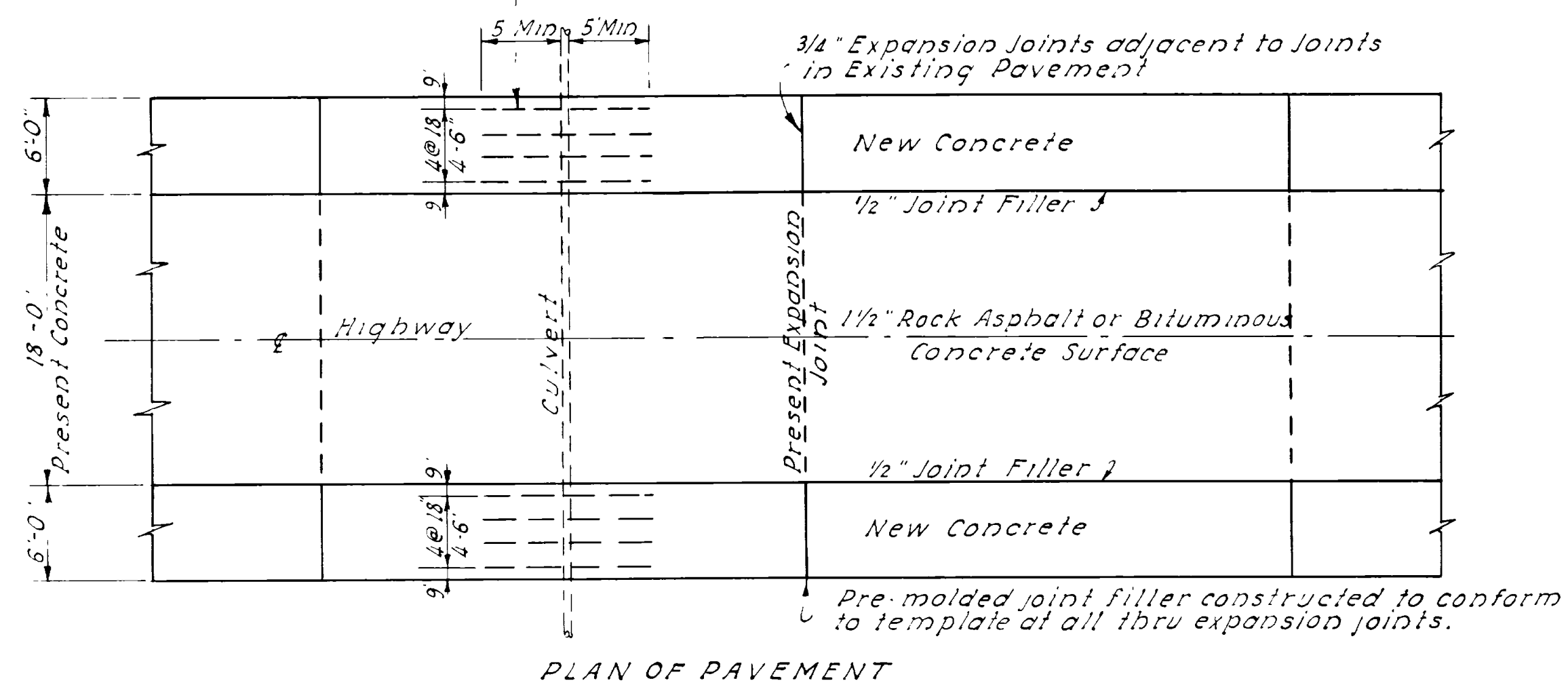


TYPICAL CROSS SECTION

FED. ROAD DIST. NO.	STATE	FED. AID PROJ. NO.	FISCAL YEAR	SHEET NO.	TOTAL SHEETS
12	UTAH			2	



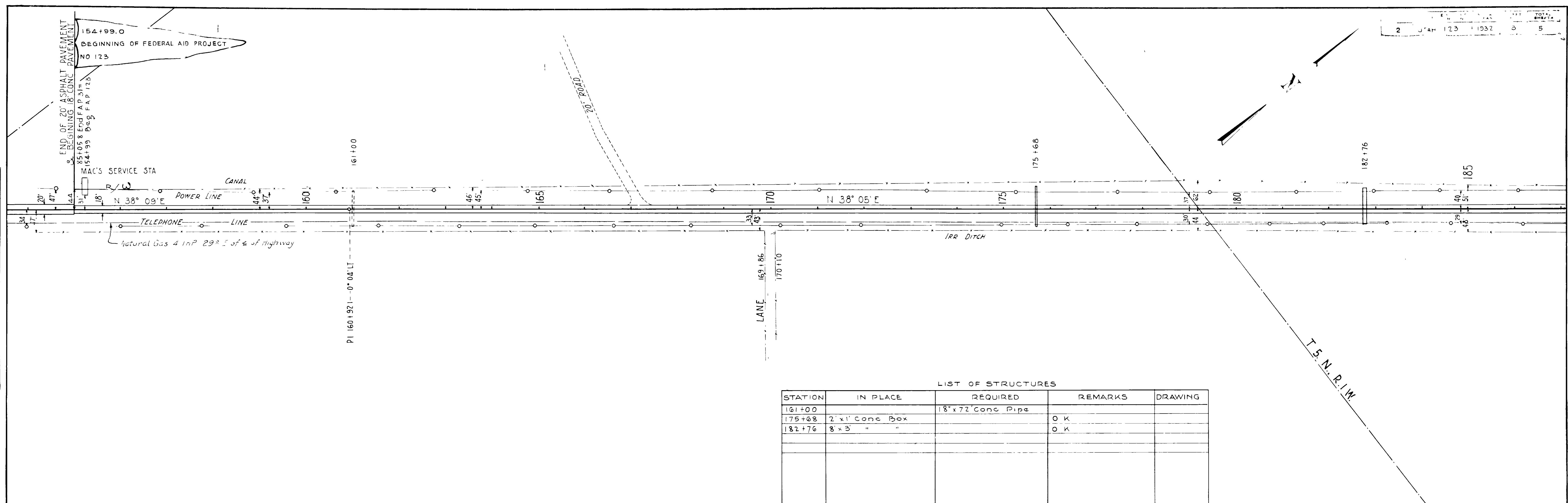
1/2" # Deformed Steel Bars shall be placed over all culverts at a depth of 3" from top of new pavement. Bars shall be of sufficient length to extend at least 5' on each side of culvert. No contraction joints shall be placed over bars.



USED ON F. A. P. NO.	UTAH STATE ROAD COMMISSION SALT LAKE CITY, UTAH H. S. KERR, CHIEF ENGINEER
E-123-A	18' BIT CONC OR ROCK ASPHALT RESURFACE & 12" NEW CONCRETE PAVEMENT 8' SHOULDERS
	DESIGNED BY W.L.A. SCALE 1" = 2'-0"
	DRAWN BY A.M.G. ISSUED
	CHECKED BY APPROVED
	EXAMINED BY W.L.A.
	TYPE "E"

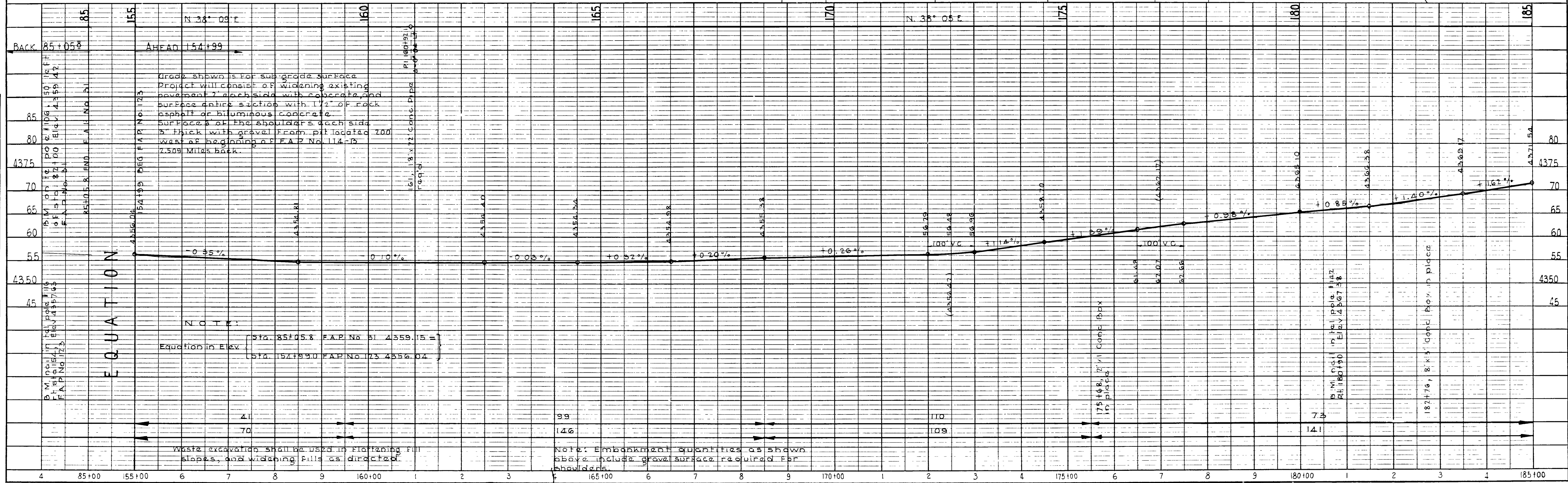
SURVEYED
 PLAN
 NOTE BOOK
 NO. 7114
 C. A. WEST
 H. S. WRIGHT
 1932

SURVEYED
 PLAN
 NOTE BOOK
 NO. 7145
 G. LEWIS
 H. WRIGHT
 1932



LIST OF STRUCTURES

STATION	IN PLACE	REQUIRED	REMARKS	DRAWING
161+00		18" x 72" Conc Pipe		
175+68	2' x 1' Conc Box		O K	
182+76	8' x 3' "		O K	

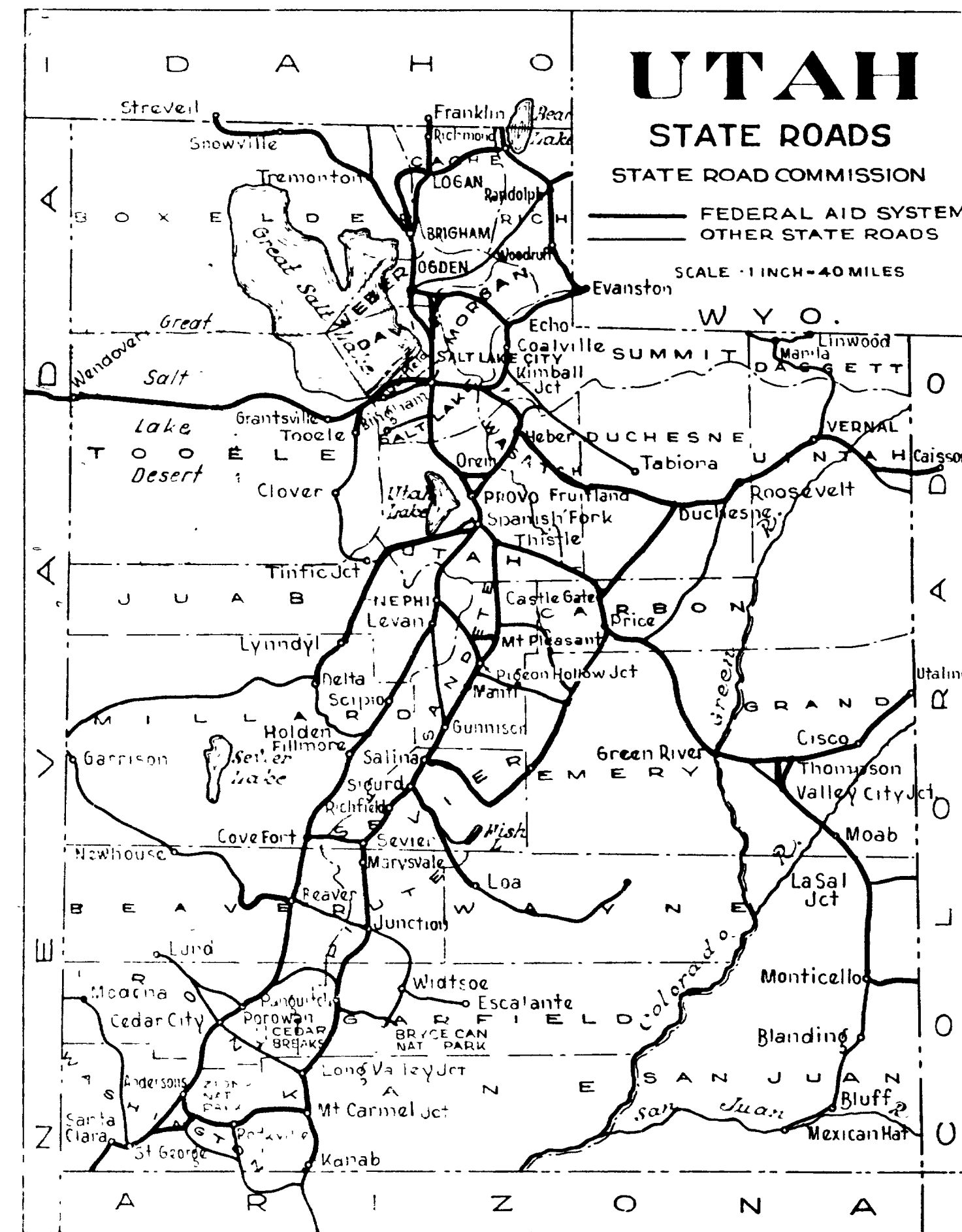


Grade shown is for subgrade surface.
 Project will consist of widening existing
 pavement 7' each side with concrete and
 surface entire section with 1 1/2" of rock
 asphalt or bituminous concrete.
 Surfaces of the shoulders each side
 3" thick with gravel from pit located 700
 west of beginning of F.A.P. No. 114-3
 7.509 Miles back.

NOTE:
 Equation in Elev. $\left\{ \begin{array}{l} \text{Sta. 85+05.8 F.A.P. No. 31 } 4359.15 = \\ \text{Sta. 154+99.0 F.A.P. No. 123 } 4356.04 \end{array} \right.$

Waste excavation shall be used in flattening fill
 slopes, and widening fills as directed.

Note: Embankment quantities as shown
 above include grave surface required for
 shoulders.



STATE OF UTAH STATE ROAD COMMISSION

PLANS OF PROPOSED STATE ROAD

FEDERAL AID PROJECT
WEBER COUNTY
DEATH-CURVE REV. SEC. A
Length 1.539 Miles

Pavement Widening Riverdale - Sec. Length 0.739 Mi.

Pavement Widening Riverdale - Ogden Length 1.106 Mi.

F.A.P. No. 123-A(3) LENGTH 1.106 MILES
F.A.P. No. 31 - (3) LENGTH 0.474 MILES
F.A.P. No. 114-C(1) LENGTH 2.971 MILES

INDEX TO SHEETS F.A.P. No. 123-A(3)

SHEET No.	DESCRIPTION	DWG.	STA.
1	Title Sheet		
2	Typical Section		
3-4	Plan and Profile		
5	Extension to 2'x1' Conc. Box	E-615	175+73
6	" " 8'x3' " "	E-2327 L-332	182+76
1-12	X Sections		

INDEX TO SHEETS F.A.P. No. 31 - (3)

SHEET No.	DESCRIPTION	DWG.	STA.
1	Title Sheet		
2	Typical Section		
3	Plan and Profile		
1	X Sections		

INDEX TO SHEETS N.R.H.P. No. 114-A (1935)

SHEET No.	DESCRIPTION	DRAWING No.	STATION
1	Title Sheet		
2	Typical Section		
3-4	Beautification		
5	Tree Guard & Support	J-453-P	

INDEX TO SHEETS N.R.H.P. No. 114-B (1935)

SHEET No.	DESCRIPTION	DRAWING No.	STATION
1	Title Sheet		
2	Typical Section		
3	Beautification		
4	Tree Guard & Support	J-453-P	

INDEX TO SHEETS N.R.H.P. No. 31 (1935)

SHEET No.	DESCRIPTION	DRAWING No.	STATION
1	Title Sheet		
2	Typical Section		
3-4	Beautification		
5	Tree Guard & Support	J-453-P	

INDEX TO SHEETS N.R.H.P. No. 123 (1935)

SHEET No.	DESCRIPTION	DRAWING No.	STATION
1	Title Sheet		
2	Typical Section		
3	Beautification		
4	Tree Guard & Support	J-453-P	

INDEX TO SHEETS F.A.P. No. 114-B

SHEET No.	DESCRIPTION	DRAWING No.	STATION
1	Title Sheet		
2	Typical Section		
3-4	Plan and Profile		
5	F.A.P. & Right of Way Markers	J-391-R	
1-3	Cross Sections		

INDEX TO SHEETS F.A.P. No. 114-C(1)

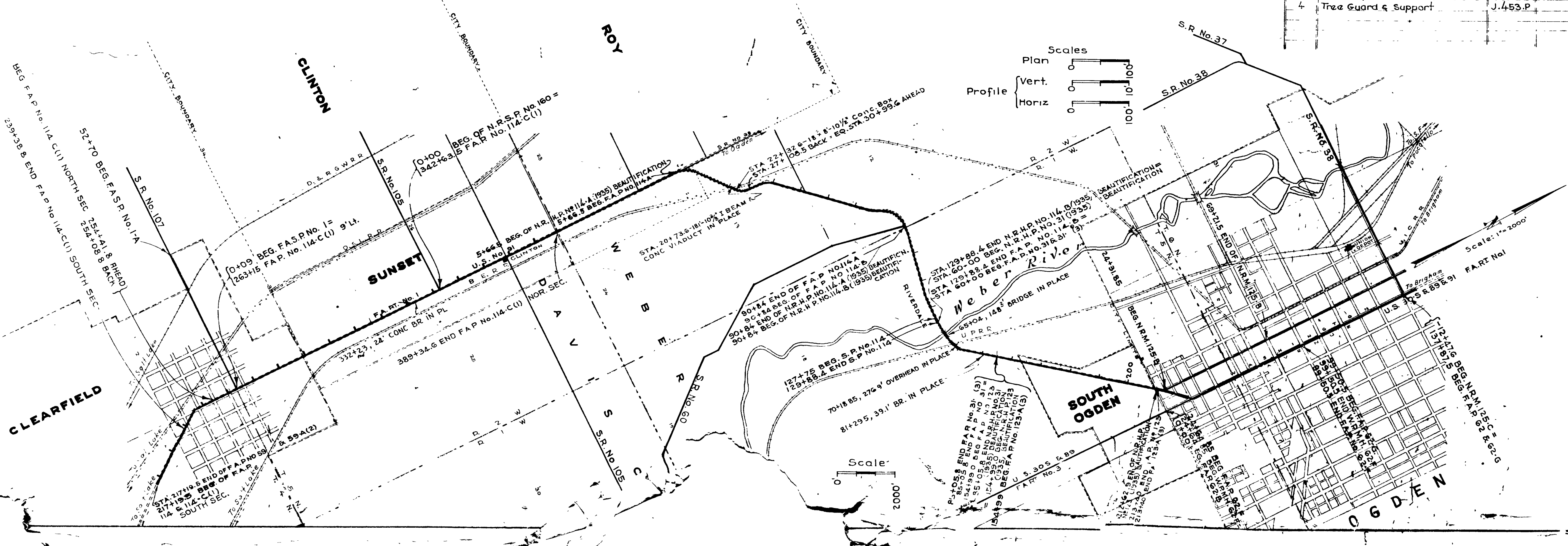
SHEET No.	DESCRIPTION	DWG.	STA.
1	Title Sheet		
2-2A	Typical Section		
3-7	Plan and Profile		
8	Extension to 4'x2'-6" Conc. Box	E-2328 L368	289+86
9	" " 4'x2'-6" " "	E-647	263+73
10-A	F.A.P. & Rt. of Way Markers	J-391-R	
1-5	X Sections		

INDEX TO SHEETS F.A.P. No. 114 A

SHEET No.	DESCRIPTION	DRAWING No.	STATION
1	Title Sheet		
2-4	Typical Sections		
3-5	Plan and Profile		
6-10	18'-10 1/2" I Beam & Conc. Viaduct	C-81	20+73.6
11-12	18' x 8'-10 1/2" x 74'-2 1/2" Conc. Box	E-359	22+32.6
13-A	Standard Pipe Headwalls	J-228-R	
13-B	Standard Pipe Headwalls	J-228-45R	
16-C	Standard Wire Cable Guard rail	J-328-R	
18-D	Super-elevating & Widening of Curves	J-343-R	
14-A	F.A.P. & Right of way Markers	J-391-R	
14-B	Data of support for trolley wire	J-433	
15	10'x5'x26'-0" Conc. Box	E-381	1+19+
1-7	Cross Sections		

INDEX TO SHEETS F.A.P. No. 123

SHEET No.	DESCRIPTION	DRAWING No.	STATION
1	Title Sheet		
2	Typical Section		
3-4	Plan & Profile		
5	F.A.P. & Right of Way Markers	J-391-R	
1-4	Cross Sections		



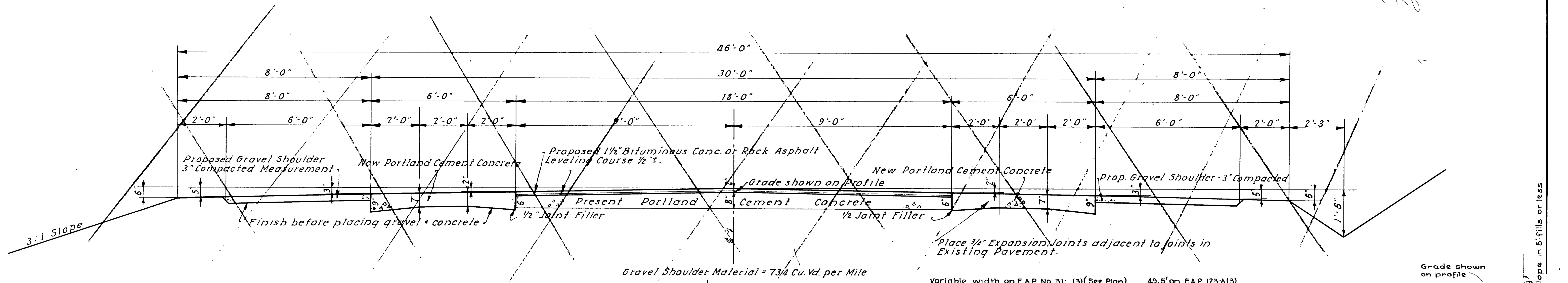
APPROVED NOVEMBER, 1931
STATE ROAD COMMISSION OF UTAH

Henry H. Blood CHAIRMAN
Walter K. Keeney MEMBER
Arthur MEMBER
Chief Engineer CHIEF ENGINEER

RECOMMENDED FOR APPROVAL
RECOMMENDED FOR APPROVAL
APPROVED

TYPICAL CROSS SECTION

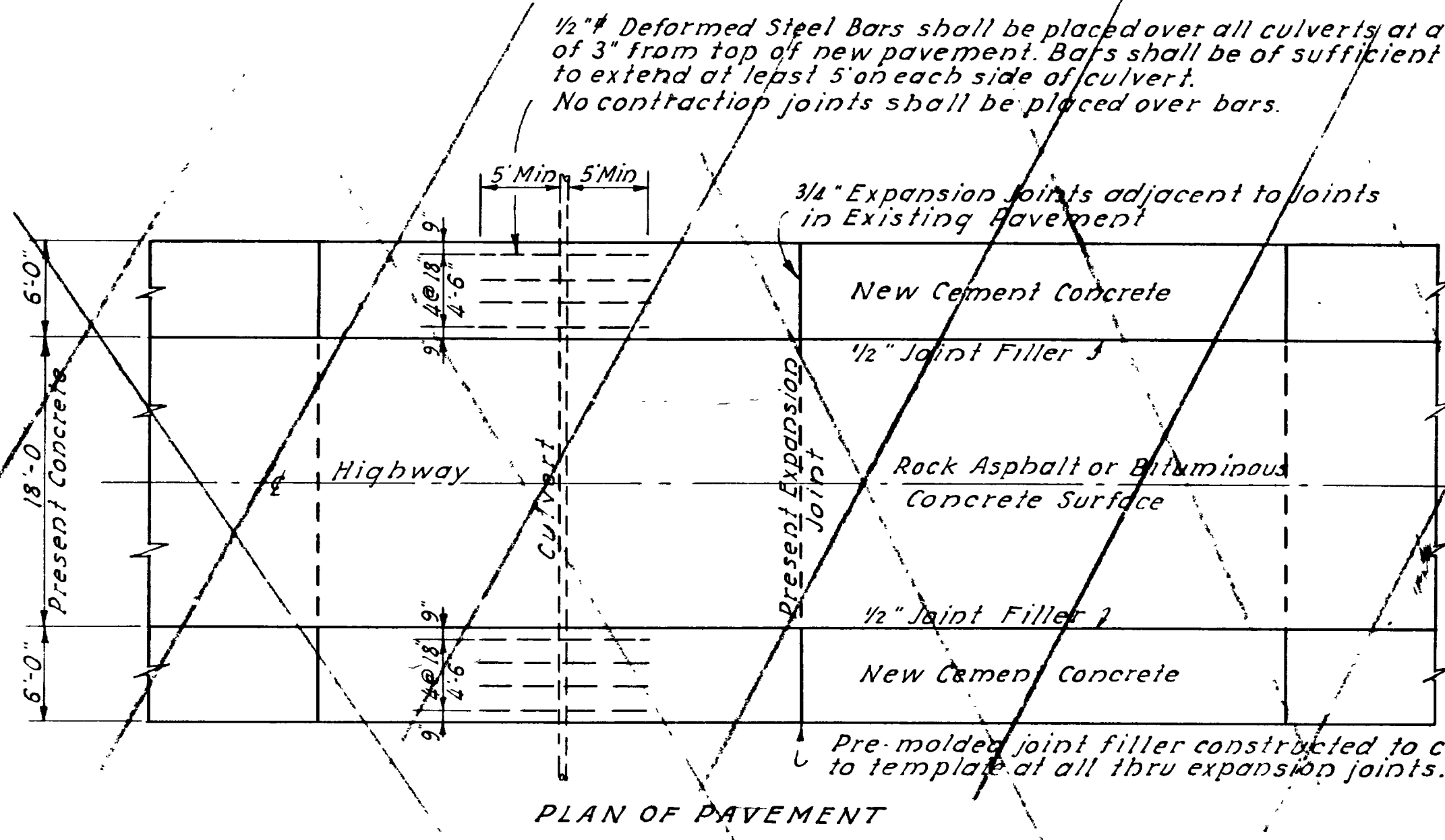
FED. ROAD DIST. NO.	STATE	FED. AID PROJ. NO.	FISCAL YEAR	SHEET NO.	TOTAL SHEETS
12	UTAH	123-A(3)	1939	2	6
12	UTAH	31 (3)	1939	2	3
12	UTAH	5 R 114	1939	2	2



Gravel Shoulder Material = 73/4 Cu. Yd. per Mile
 Variable width on F.A.P. No. 31 (3) (See Plan) 49.5' on F.A.P. 123-A(3)

REVISIONS	DATE	BY	CHK'D	APP'D

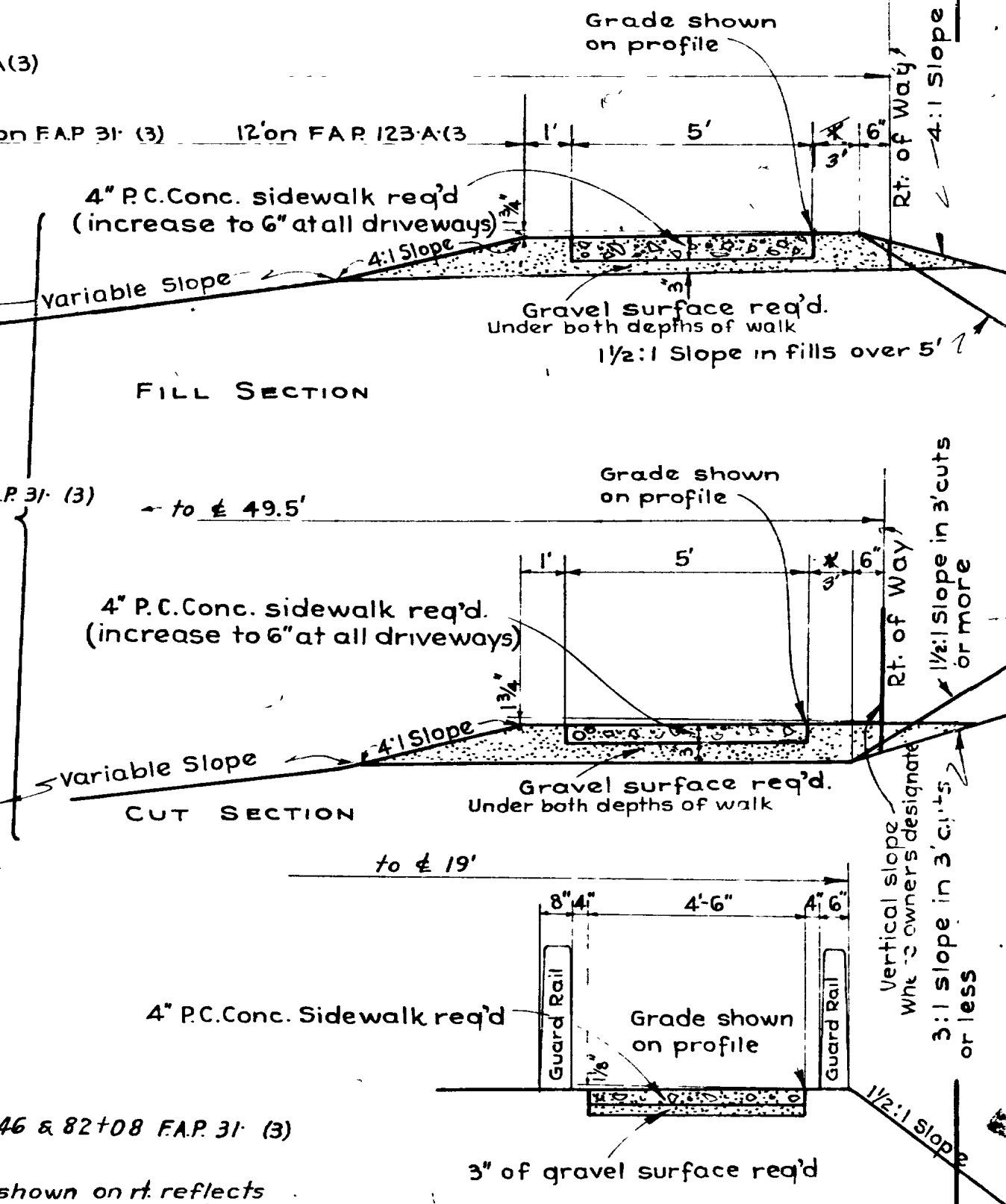
1/2" # Deformed Steel Bars shall be placed over all culverts at a depth of 3" from top of new pavement. Bars shall be of sufficient length to extend at least 5' on each side of culvert. No contraction joints shall be placed over bars.



PLAN OF PAVEMENT

These sec used between 82+08 - 85+05 B & 60+00 - 62+46 F.A.P. 31 (3)
 " " " " 154+99 & 211+08 F.A.P. 123-A(3)
 " " " " 127+75 " 129+88 & 5 R 114

FOR LOCATION OF SIDEWALK SEE SHEETS 3-4-5



Revised for F.A.P. 123-A(3)-31-A(3)-S.R. 114 SIDEWALK CONST. 10-538

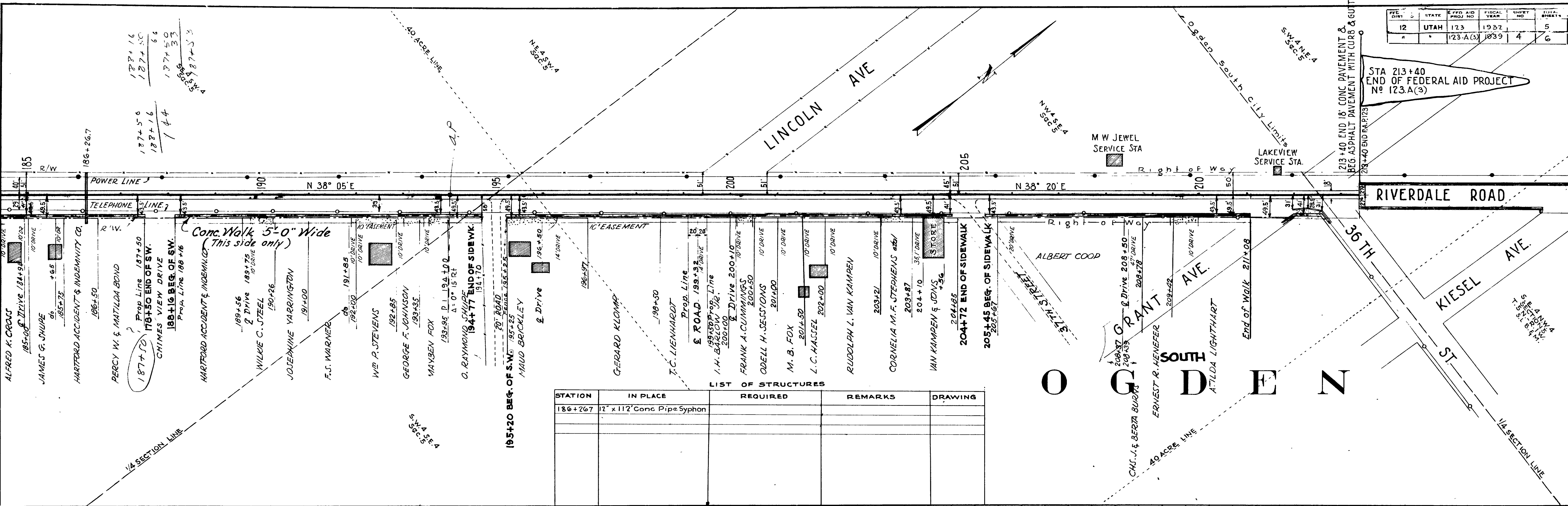
USED ON F. A. P. NO.	UTAH STATE ROAD COMMISSION
E-123-A	BALT LAKE CITY - UTAH H. S. KERR - CHIEF ENGINEER
18' BIT. CONC. OR ROCK ASPHALT RESURFACE & 12' NEW CEMENT CONC. PAVEMENT 8' SHOULDERS	
DESIGNED BY W.L.A.	SCALE 1" = 2'-0"
DRAWN BY A.M.G.	ISSUED
CHECKED BY	APPROVED
EXAMINED BY W.L.A.	
TYPE "E"	

Note: Outside guard-rail shown on r.t. reflects condition after being reset by state forces.

FED. DIST.	STATE	FED. AID PROJ. NO.	FISCAL YEAR	SHEET NO.	TOTAL SHEETS
12	UTAH	123	1937	5	6
		123-A(3)	1939	4	6

STA 213+40
END OF FEDERAL AID PROJECT
NO 123.A(3)

PLAN	DATE
SUBMITTED BY	1937
NOTE BOOK NO.	
NO. OF SHEETS	
TRACED	



PROFILE	DATE
SUBMITTED BY	1937
NOTE BOOK NO.	
NO. OF SHEETS	
TRACED	

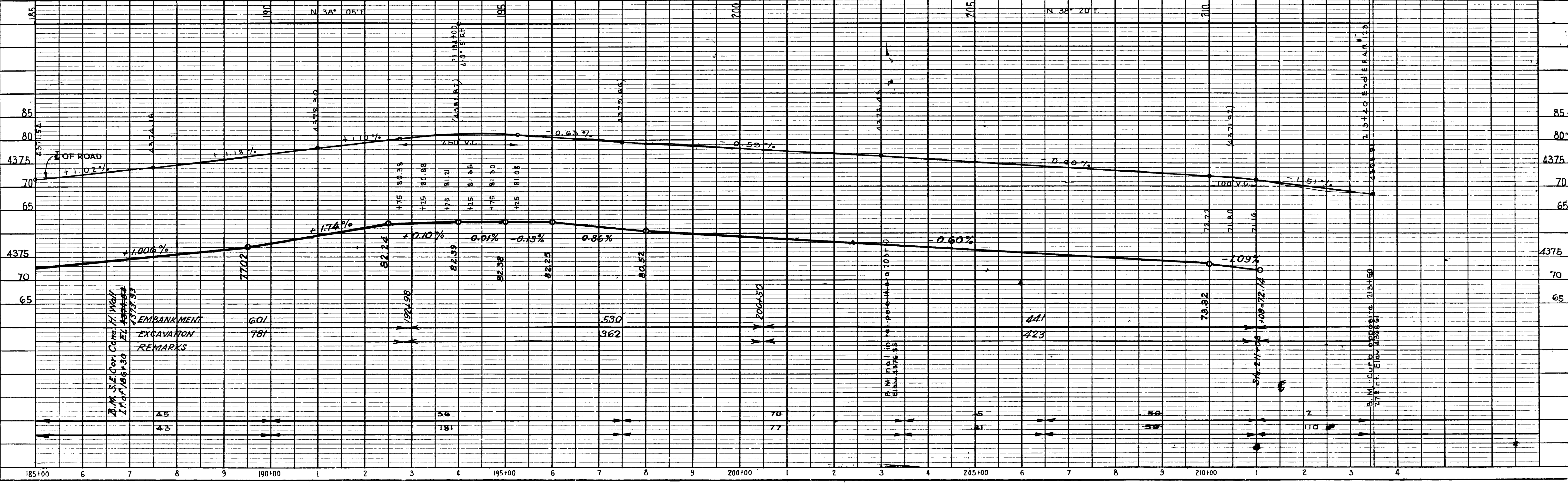
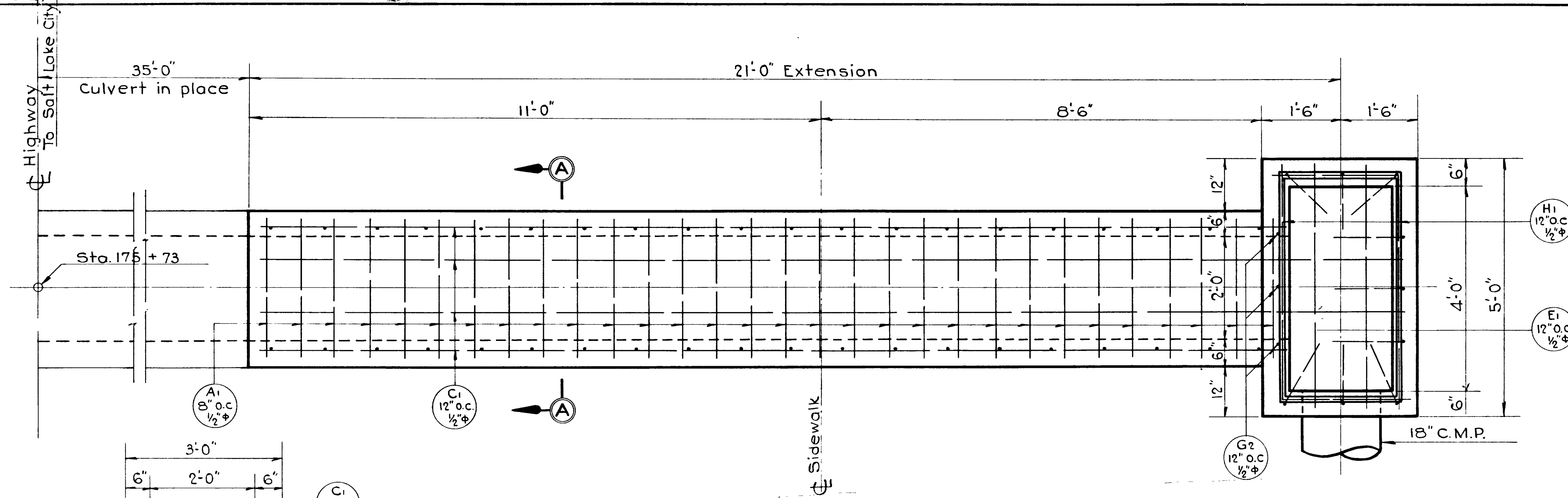
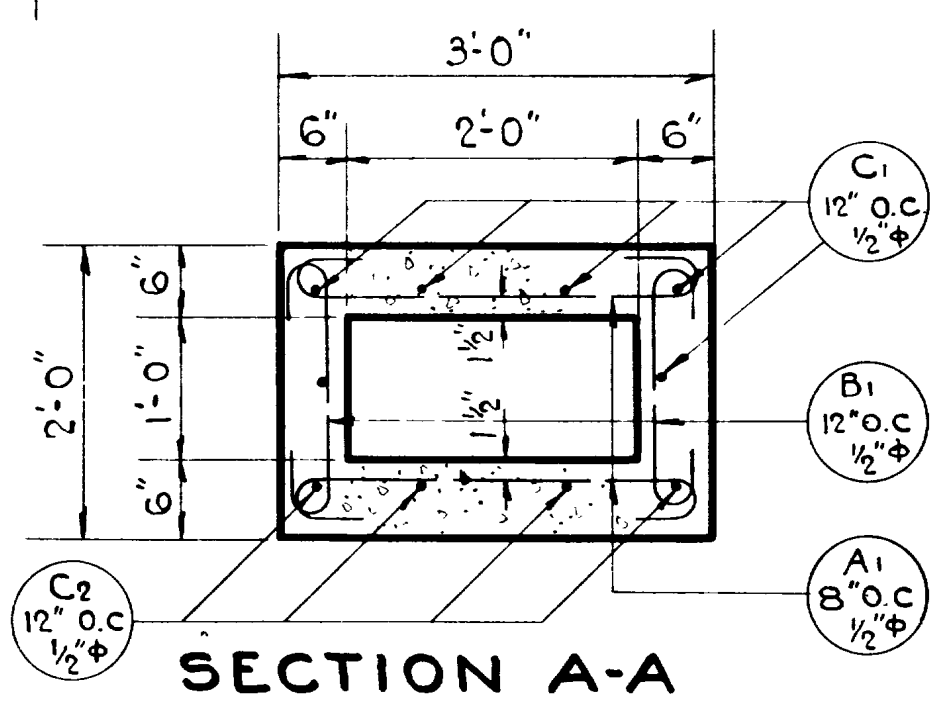


PLATE 1-PLAN-PROFILE O.P.E.A.E. STANDARD
KUPFFER & ESSER CO. NEW YORK

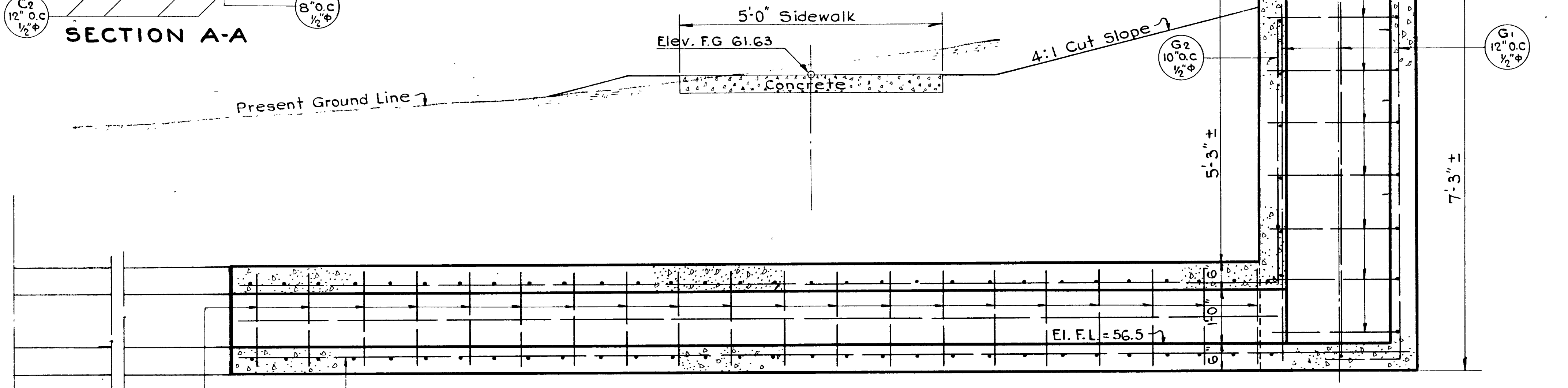


PLAN
3/4" = 1'-0"

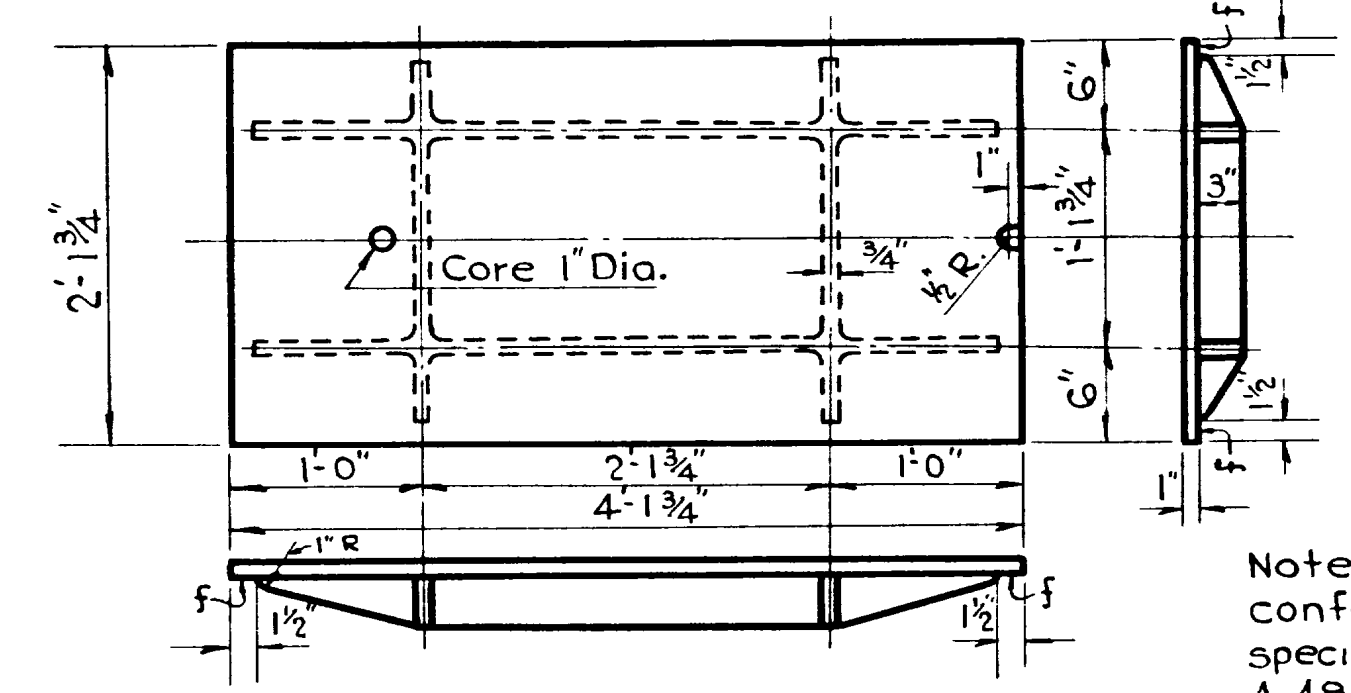


SECTION A-A

C.I. Frame & Cover - See detail
 Note: Top of Cleanout to be level with ground surface of farm driveway.



LONGITUDINAL SECTION
3/4" = 1'-0"



Note: Cast Iron shall conform to A.S.T.M Std. specifications. Designation A-48-32T.

DETAIL OF CAST IRON FRAME AND COVER
1" = 1'-0"

MARK	LOCATION	NO. OF BARS	LGTH	No. BARS	TOTAL LENGTH	SKETCH	O TO O
A1	Top & Bott. Slab	1/2"	310'	60	230'-0"		2'-8 1/2"
B1	Sidewall	1/2"	2'-10"	40	113'-4"		1'-8 1/2"
C1	Top Slab	1/2"	19'-9"	6	118'-6"		
C2	Bott. "	1/2"	22'-3"	4	89'-0"		
E1	Clean Out Floor	1/2"	4'-9"	2	9'-6"		
G1	" " Walls	1/2"	8'-6"	9	76'-6"		7'-0"
G2	" " "	1/2"	5'-5"	3	16'-3"		
H1	" " "	1/2"	7'-0"	13	91'-0"		4'-6"

744'-1" of 1/2" @ .668 = 497.0 Lbs.

GENERAL NOTES

All concrete to be Class "A" and is to be kept moist 14 days after pouring.
 Reinforcing steel to be deformed bars overlapped not less than 50 diameters at all splices and secured against displacement by wiring at all intersections with #16 iron wire, and shall have a minimum of 1" clear cover of concrete. All reinforcing steel to conform to the A.A.S.H.O. Specs. of 1935.
 Bar diagrams are not drawn to scale and those bars not detailed are either straight or field bent. All dimensions are to center bar unless otherwise shown.

DESIGN DATA

A.A.S.H.O. Specifications of 1935.
 Live Load: H-15 Loading
 Dead Load: Earth 100#/Cu.Ft Concrete 150#/Cu.Ft.
 Stresses: Concrete 3000#_a f_c = 900#_a f_s = 16000#_a

QUANTITIES

Structural Excav.	30 Cu. Yds.
Concrete Class "A"	5 " "
Cement	32 Sacks
Reinforcing Steel	497 Lbs.
Cast Iron Frame & Cover	1- Complete

UTAH STATE ROAD COMMISSION
 SALT LAKE CITY - UTAH
 EZRA C. KNOWLTON - CHIEF ENGINEER

21'-0" EXT'N. TO 2x1' CONC. BOX AND CLEAN OUT

Sta. 175 + 73 F.A.P. 123
 Ogden-Riverdale Weber Co.

DESIGNED BY: K.W.T. SCALE: AS NOTED
 DRAWN BY: K.W.T. DATE: 10/19/38
 CHECKED BY: APPROVED: [Signature]
 EXAMINED BY: [Signature]

BRIDGE NO. _____ DRG. NO. **E-615**

REVISIONS

NO.	DATE	DESCRIPTION